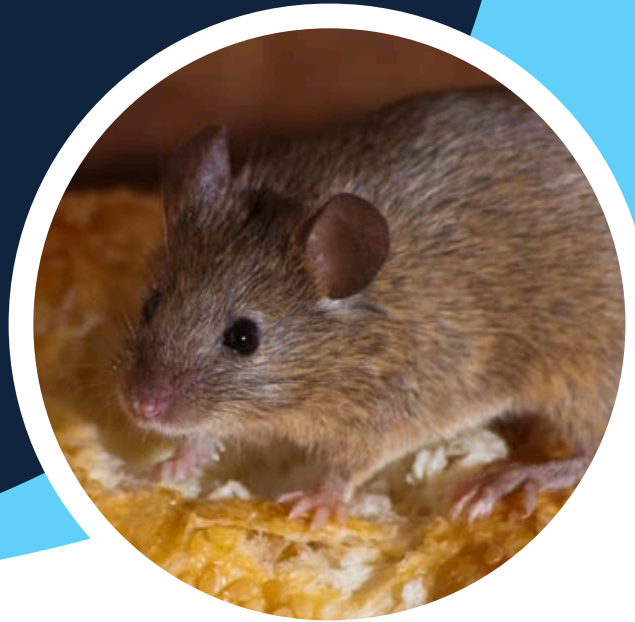


HOUSE MOUSE

MUS DOMESTICUS

A quick ID for the Domestic House Mouse.

If in doubt, contact a trained and professional Pest Technician.



DESCRIPTION

Adults

- Variable in colour from grey/dark grey to almost black.
- Tail the same length as the head + body, and lightly furred.

LIFE CYCLE

Sexually mature	5-6 weeks
Gestation Period	19-20 days
Litter size	5-8
Weaning Period	21-23 days

Unlike many mammals, mice do not have to wait until the original litter is weaned before the females come back into oestrus. This means that the female may be able to conceive again after the original litter is born.

At birth, house mice weigh just one gram - they are born blind and hairless and are fully furred by 14 days.

MISTAKEN IDENTITY

- Field, Wood Mice.
- Water, Bank, Field Voles.
- Juvenile Brown Rats.

POTENTIAL ISSUES

- **Disease Transmission:** Mice can spread diseases like hantavirus, salmonella, and leptospirosis.
- **Food Contamination:** They contaminate food and surfaces with droppings, urine, and saliva.
- **Property Damage:** Mice chew through wires, insulation, and wood, potentially causing fires or structural damage.

SIGNS OF INFESTATION

- **Sightings:** The surest sign of presence. But it is not a definitive sign of an infestation.
- **Smell:** 'Stale' odours, which can be easily recognised.
- **Droppings:** On average about 3-7mm in length and spindle-shaped like a grain of rice. One house mouse produces about 80 droppings a day.
- **Urine:** Small mounds or 'urine pillars' consisting of dirt, grease, dust and urine are sometimes formed in places that are habitually moved by house mice.
- **Footprints and Tail Swipes:** Footprints may be seen where mice have been moving over muddy or dusty surfaces.
- **Harbourage, burrows:** A house mouse can gain harbourage via a gap that is more than 5mm wide. As mice are good climbers harbourages may be situated at any level.
- **Damage to goods:** Gnawing of packaging, hoarded food, or growing crops.

CONTROL

- **Integrated Pest Management:** Chemical controls, Physical Controls, Environmental Management, Proofing.